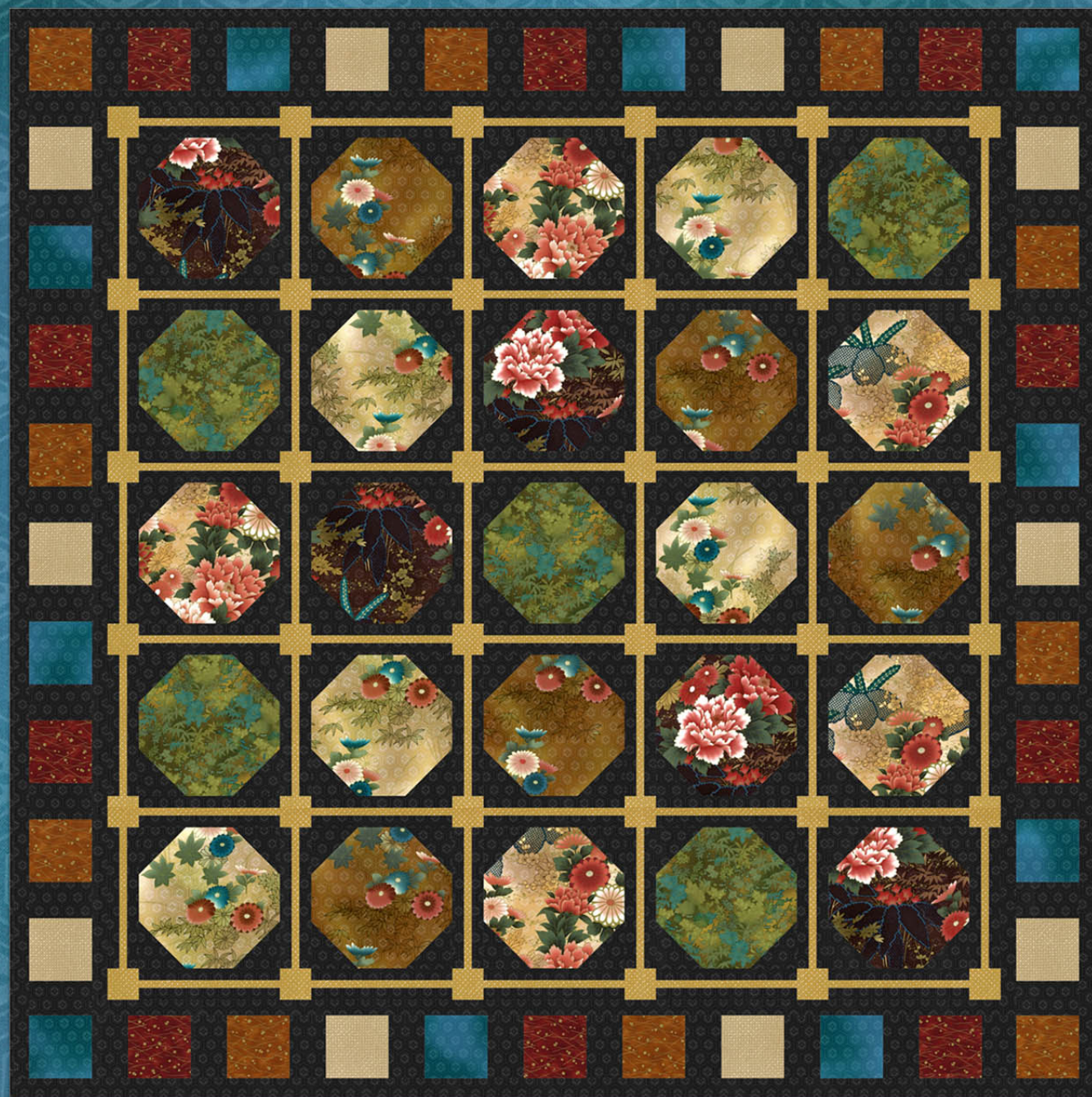


# Nara Gardens

Collection by Hoffman California Fabrics  
Quilt project by Nancy Mahoney



Quilt size 69½" square

Free pattern available at [www.HoffmanFabrics.com](http://www.HoffmanFabrics.com).  
View swatches and visit our Free Quilt Patterns webpage.



# Nara Gardens

*Fabric collection by Hoffman Fabrics*

Quilt design by Nancy Mahoney • Quilt size: 69½" square • Block size: 9"

---

## Yardage

Fabric A • **G9028 #4** - 4 yards for blocks, borders, sashing, and binding

Fabric B • **G9030 #36g** - ¾ yard for sashing

Fabric C • **G9025 #6g** - ⅝ yard for blocks

Fabric D • **G9025 #33g** - ⅝ yard for blocks

Fabric E • **G9026 #33g** - ⅝ yard for blocks

Fabric F • **G9026 #36g** - ⅝ yard for blocks

Fabric G • **G9027 #96g** - ⅝ yard for blocks

Fabric H • **G9028 #21** - 1/3 yard for blocks

Fabric I • **G9029 #66g** - 1/3 yard for blocks

Fabric J • **G9029 #39g** - 1/3 yard for blocks

Fabric K • **G9030 #20g** - 1/3 yard for blocks

## Cutting

*All strips are cut across the width of fabric (wof).*

From Fabric A, cut:

- (10) 3½" x wof strips; crosscut into (100) 3½" squares
- (3) 4½" x wof strips; crosscut into (32) 2¾" x 4½" rectangles and (8) 3" x 4½" rectangles
- (8) 2¼" x wof binding strips
- (16) 1½" x wof border strips
- (30) 1¼" x wof sashing strips

From Fabric B, cut:

- (3) 2½" x wof strips; crosscut into (36) 2½" squares
- (15) 1" x wof sashing strips

From Fabric C, cut:

- (2) 9½" x wof strips; crosscut into (5) 9½" squares

From Fabric D, cut:

- (2) 9½" x wof strips; crosscut into (5) 9½" squares

From Fabric E, cut:

- (2) 9½" x wof strips; crosscut into (5) 9½" squares

From Fabric F, cut:

- (2) 9½" x wof strips; crosscut into (5) 9½" squares

From Fabric G, cut:

- (2) 9½" x wof strips; crosscut into (5) 9½" squares

From Fabric H, cut:

- (2) 4½" x wof strips; crosscut into (10) 4½" squares

From Fabric I, cut:

- (2) 4½" x wof strips; crosscut into (10) 4½" squares

From Fabric J, cut:

- (2) 4½" x wof strips; crosscut into (10) 4½" squares

From Fabric K, cut:

- (2) 4½" x wof strips; crosscut into (10) 4½" squares

# Construction

1. Draw a diagonal line from corner to corner on the wrong side of each 3½" fabric A square. Place a marked square on diagonally opposite corners of a 9½" fabric C square, right sides together. Sew along the marked line and trim away the corner fabric, leaving a ¼" seam allowance. Sew marked squares on the remaining two corners of the fabric C square and trim. Press the seam allowances toward the resulting triangles. Make five blocks.

2. Repeat step 1, sewing the remaining marked squares to the corners of the fabric D, fabric E, fabric F, and fabric G squares. Make five blocks of each.

3. Sew 1¼" fabric A strips to both long edges of each 1" fabric B strip to make a strip set. Make 15. Cut the strip sets into (60) 9½"-wide segments.

4. Arrange and sew together six segments from step 3 and five blocks, beginning with a sashing segment and alternating them as shown in the photo to make a block row. Press the seam allowances toward the sashing segments. Make five rows.

5. Arrange and sew together six 2½" fabric B squares and five segments from step 3, beginning with a square and alternating them as shown in the photo to make a sashing row. Press the seam allowances toward the sashing segments. Make six rows.

6. Sew the block rows and sashing rows together, beginning with a sashing row and alternating them as shown in the photo. Press the seam allowances toward the sashing rows. The quilt top should measure 57½" x 57½".

7. Use 8 of the 1½"-wide fabric A strips and sew them together in pairs. Trim two strips to measure 57½" long and sew them to the sides of the quilt top. Trim the remaining two strips to measure 59½" and sew them to the top and bottom of the quilt top.

8. For the pieced border strips; use nine 4½" squares for each border, referring to the photo for placement guidance. Sew nine squares and eight 2¾" x 4½" fabric A rectangles together, starting with a square. Sew a 3" x 4½" fabric A rectangle to both ends of each strip. Make four strips measuring 4½" x 59½"

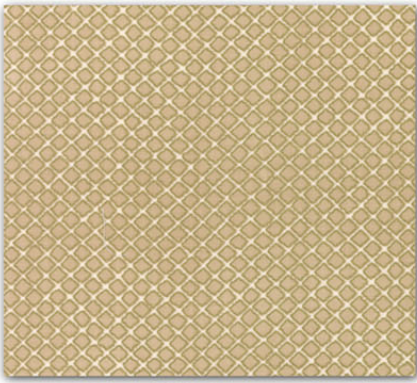
9. Sew two of the border strips from step 8 to the sides of the quilt top. Sew a 4½" square to both ends of the two remaining border strips and sew them to the top and bottom of the quilt top.

10. Use the remaining 1½"-wide fabric A strips and sew them together in pairs. Trim two strips to measure 67½" long and sew them to the sides of the quilt top. Trim the remaining two strips to measure 69½" and sew them to the top and bottom of the quilt top.

11. Layer the quilt top with batting and backing; baste. Quilt as desired. Using the 2¼"-wide fabric A strips, bind the edges to finish. Add a label to the back of your quilt and enjoy!



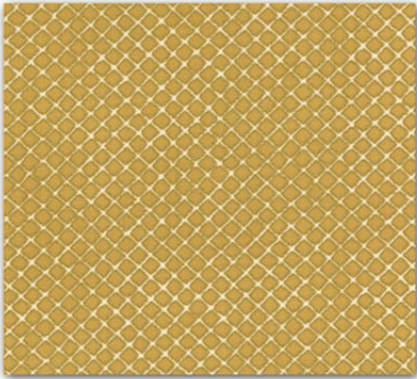
# Nara Gardens



**G9030-33G Cream Gold**  
Fabric K -  $\frac{1}{3}$  yds



**G9026 33G-Cream Gold**  
Fabric E -  $\frac{5}{8}$  yds



**G9030 36G-Amber Gold**  
Fabric B -  $\frac{3}{4}$  yd



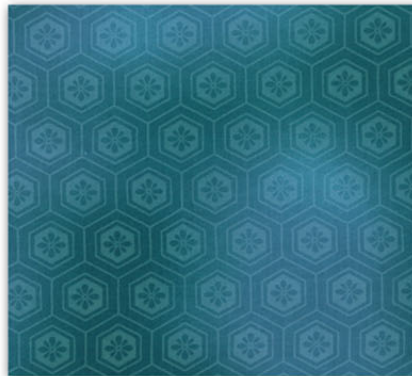
**G9027 29G-Jade Gold**  
Fabric G -  $\frac{5}{8}$  yd



**G9026 36G-Amber Gold**  
Fabric F -  $\frac{5}{8}$  yd



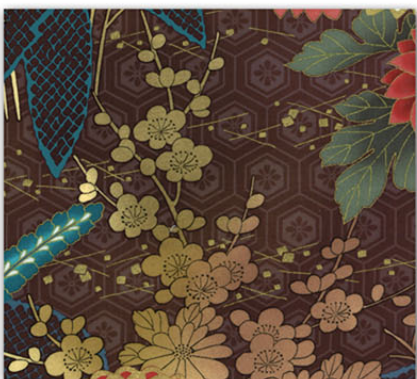
**G9025 33G-Cream Gold**  
Fabric D -  $\frac{5}{8}$  yd



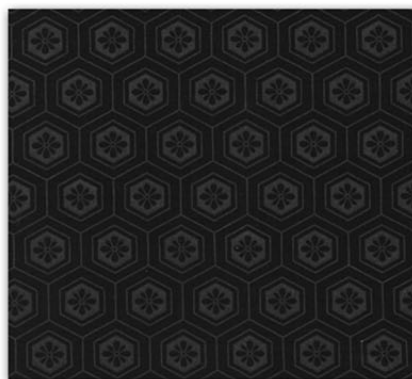
**G9028 21-Teal**  
Fabric H -  $\frac{1}{3}$  yd



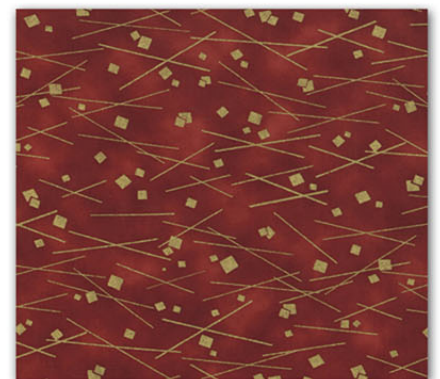
**G9029 36G-Amber Gold**  
Fabric I -  $\frac{1}{3}$  yd



**G9025 6G-Brown Gold**  
Fabric C -  $\frac{5}{8}$  yd



**G9028 4-Black**  
Fabric A - 4 yds



**G9029 39G-Rust Gold**  
Fabric J -  $\frac{1}{3}$  yd