

Nellie's Garden

Fabric collection by Nancy Mahoney



Garden Party quilt by Nancy Mahoney
Quilt size: 60½" square



pbtex.com

Garden Party

Quilt by Nancy Mahoney, using her *Nellie's Garden* fabric collection for P&B Textiles

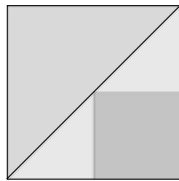
Quilt size: 60½" ■ Block size: 12"

Yardage		Cutting - <i>All strips are cut across the width of fabric (wof)</i>
NELL 415 C	1 fat eighth	(4) 4⅞" squares; cut once diagonally to make (8) triangles (4) 2⅝" border squares
NELL 415 G	1 fat quarter	(4) 4⅞" squares; cut once diagonally to make (8) triangles (4) 2⅝" border squares (8) 2½" circles prepared with fusible web
NELL 415 O	1 fat quarter	(4) 4⅞" squares; cut once diagonally to make (8) triangles (4) 2⅝" border squares (8) 2½" circles prepared with fusible web
NELL 416 B	1 fat eighth	(4) 2⅝" border squares (8) 2½" squares
NELL 416 P	1 fat quarter	(4) 4⅞" squares; cut once diagonally to make (8) triangles (4) 2⅝" border squares (16) 2½" squares
NELL 416 Y	1¼ yards	(2) 4¼" x wof strips; crosscut into (16) 4¼" squares - cut twice diagonally to make (64) quarter-square triangles (7) 2¼" x wof binding strips (6) 2" x wof border strips (10) 2⅜" squares; cut once diagonally to make (20) half-square triangles
NELL 417 C	1 fat eighth	(3) 2⅝" border squares (8) 2½" squares
NELL 417 P	1 fat eighth	(3) 2⅝" border squares (8) 2½" squares
NELL 417 Y	1 fat eighth	(4) 2⅝" border squares (8) 2½" squares
NELL 418 C	1 fat quarter	(4) 4⅞" squares; cut once diagonally to make (8) triangles (4) 2⅝" border squares (8) 2½" squares
NELL 418 G	1 fat quarter	(4) 4⅞" squares; cut once diagonally to make (8) triangles (4) 2⅝" border squares (8) 2½" squares
NELL 418 Y	1 fat eighth	(4) 2⅝" border squares (8) 2½" squares
NELL 419 B	1 fat eighth	(4) 4⅞" squares; cut once diagonally to make (8) triangles (4) 2⅝" border squares
NELL 419 C	1 fat quarter	(4) 4⅞" squares; cut once diagonally to make (8) triangles (4) 2⅝" border squares (8) 2½" circles, prepared with fusible web
NELL 419 G	1 fat quarter	(3) 2⅝" border squares (8) 2½" squares
NELL 420 B	1 fat quarter	(4) 4⅞" squares; cut once diagonally to make (8) triangles (3) 2⅝" border squares (8) 2½" circles, prepared with fusible web
NELL 420 G	1 fat quarter	(4) 4⅞" squares; cut once diagonally to make (8) triangles (3) 2⅝" border squares (8) 2½" squares
NELL 420 P	1 fat quarter	(4) 4⅞" squares; cut once diagonally to make (8) triangles (2) 2⅝" border squares (8) 2½" circles, prepared with fusible web

Yardage		Cutting - All strips are cut across the width of fabric (wof)
NELL 421 G	1 fat eighth	(4) 2 $\frac{3}{8}$ " border squares (8) 2 $\frac{1}{2}$ " circles, prepared with fusible web
NELL 421 K	1 fat eighth	(4) 2 $\frac{3}{8}$ " border squares (8) 2 $\frac{1}{2}$ " squares
NELL 421 R	1 fat eighth	(4) 4 $\frac{7}{8}$ " squares; cut once diagonally to make (8) triangles (3) 2 $\frac{3}{8}$ " border squares
CSNE 01 N	2 $\frac{1}{4}$ yards	(6) 4 $\frac{1}{2}$ " x wof strips; crosscut into (48) 4 $\frac{1}{2}$ " squares (2) 4 $\frac{1}{4}$ " x wof strips; crosscut into (16) 4 $\frac{1}{4}$ " squares - cut twice diagonally to make (64) quarter-square triangles (8) 2 $\frac{3}{8}$ " x wof strips; crosscut into (96) 2 $\frac{3}{8}$ " squares - cut once diagonally to make (192) half-square triangles (6) 2" x wof border strips (6) 2 $\frac{3}{8}$ " squares; cut once diagonally to make (12) half-square triangles
3 $\frac{3}{8}$ yards of any <i>Nellie's Garden</i> fabric for backing		
1 yard of 16"-wide lightweight fusible web and 3" square of template plastic		

Making the Blocks

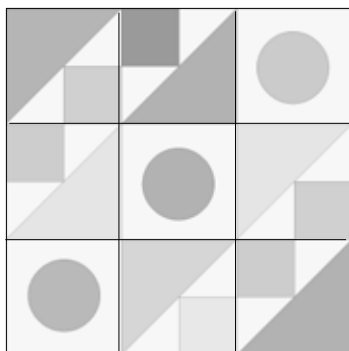
1. Randomly arrange one 4 $\frac{7}{8}$ " print triangle, two 2 $\frac{3}{8}$ " cream triangles, and one 2 $\frac{1}{2}$ " print square as shown. Sew the cream triangles to adjacent sides of the print square and then add the print triangle. Make (96) units.



2. Draw a 2 $\frac{1}{2}$ " circle on template plastic. Cut out the circle template, cutting on the drawn line. Following the manufacturer's directions, use the template to trace (48) 2 $\frac{1}{2}$ " circles onto the paper side of the fusible web. Fuse the circles to the wrong side of the fabrics as indicated in the cutting list. Cut out each circle on the drawn line.

3. Fold the 4 $\frac{1}{2}$ " cream squares in half vertically and horizontally and finger-press to establish centering lines. Position a prepared circle in the center of each cream square and fuse in place. Use a matching color thread and the machine stitch of your choice to finish the raw edges of each circle. Make (48) circle units.

4. Lay out six units from step 1 and three circle units from step 3 as shown. Join the units into rows and then join the rows to complete a block. Make (16) blocks.



Assembly

5. Lay out the blocks in four rows of four blocks each, rotating the blocks as shown in the photo to form a large diamond. Join the blocks into rows and then join the rows together to make a 48 $\frac{1}{2}$ " square.

6. Join the 2"-wide cream strips end to end. From the long strip, cut two 51 $\frac{1}{2}$ "-long strips and two 48 $\frac{1}{2}$ "-long strips. Sew the shorter strips to the sides and the longer strips to the top and bottom of the quilt top. The quilt top should measure 51 $\frac{1}{2}$ " square.

7. To make the pieced border, sew together (16) yellow quarter-square triangles, (16) cream quarter-square triangles, and (17) 2 $\frac{3}{8}$ " print squares as shown to make a border strip. Sew one 2 $\frac{3}{8}$ " cream triangle and one 2 $\frac{3}{8}$ " yellow triangle to each end of each strip. The strip should measure 3 $\frac{1}{2}$ " x 51 $\frac{1}{2}$ ". Make (4) border strips.



8. For each corner block, sew together three 2 $\frac{3}{8}$ " yellow triangles, one 2 $\frac{3}{8}$ " cream triangle, and one 2 $\frac{5}{8}$ " print square to make a 3 $\frac{1}{2}$ " block. Make (4) blocks.



9. Sew two borders from step 7 to opposite sides of the quilt top. Sew a corner block to the ends of the remaining two strips and sew them to the top and bottom of the quilt top.

10. Join the 2"-wide yellow strips end to end. From the long strip, cut two 60 $\frac{1}{2}$ "-long strips and two 57 $\frac{1}{2}$ "-long strips. Sew the shorter strips to the sides and the longer strips to the top and bottom of the quilt top.

11. Layer the quilt top with batting and backing; baste. Quilt as desired and bind the edges to finish.

Nellie's Garden

Fabric Collection by Nancy Mahony



NELL 415 C



NELL 415 G



NELL 415 O



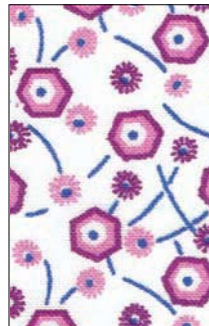
NELL 416 B



NELL 416 P



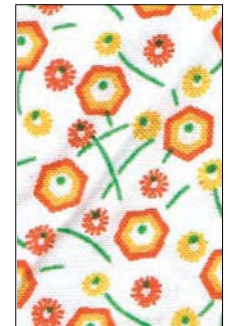
NELL 416 Y



NELL 417 C



NELL 417 P



NELL 417 Y



NELL 418 C



NELL 418 G



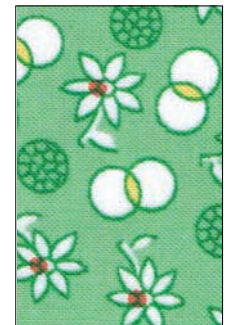
NELL 418 Y



NELL 419 B



NELL 419 C



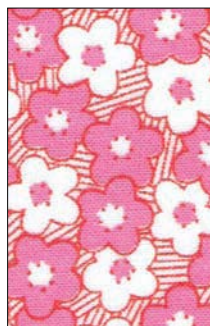
NELL 419 G



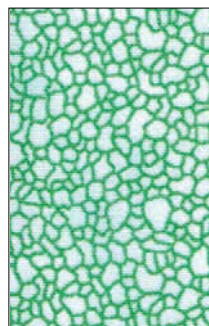
NELL 420 B



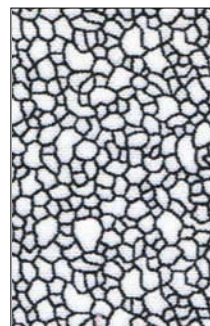
NELL 420 G



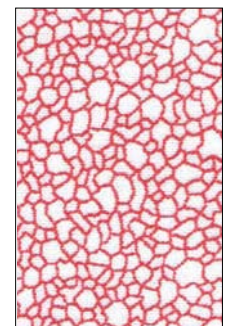
NELL 420 P



NELL 421 G



NELL 421 K



NELL 421 R

P&B Textiles ♦ 1580 Gilbreth Road, Burlingame, CA 94010 ♦ 800-852-2327

For wholesale orders: 1331 Regal Row, Suite A, Dallas, TX 75247 ♦ 800-351-9087 ♦ www.pbtex.com

1 100% cotton ♦ Cold wash & dry ♦ 43"/44" ♦ Colors may vary due to printing process ♦ 12/09
All fabrics shown at 100% scale.