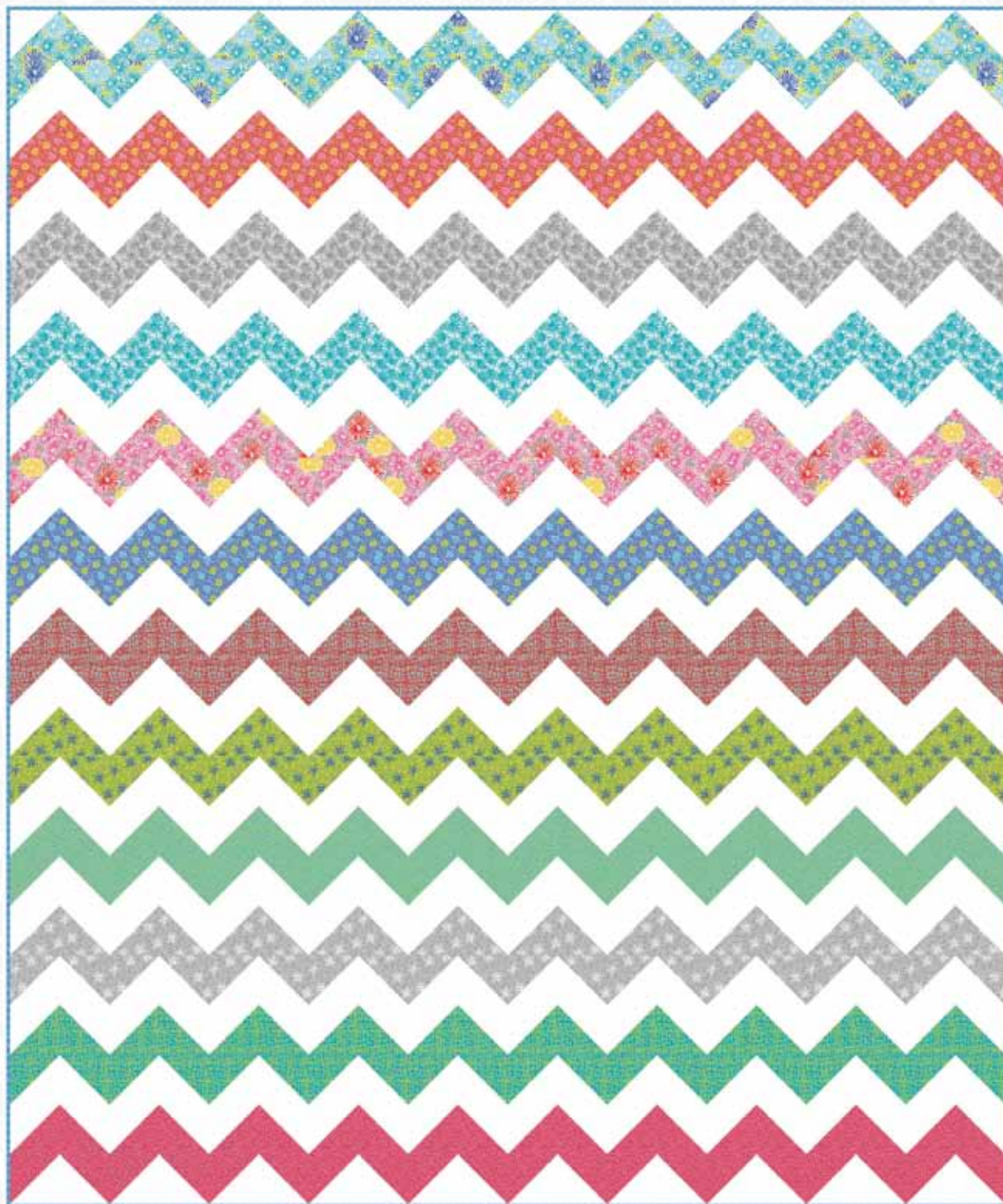


# Urban Classics

by Nancy Mahoney



*Urban Chevrons* quilt by Nancy Mahoney available as a free download at [pbtex.com](http://pbtex.com) • Size: 70"x 84"

# Urban Classics

Urban Chevrons quilt by Nancy Mahoney featuring her *Urban Classics* collection for P&B Textiles • Quilt Size: 70"x 84"

## Yardage

UCLA 981 B	$\frac{5}{8}$ yard
UCLA 981 P	$\frac{5}{8}$ yard
UCLA 982 G	$\frac{5}{8}$ yard
UCLA 982 S	$\frac{5}{8}$ yard
UCLA 983 S	$\frac{5}{8}$ yard
UCLA 983 T	$\frac{5}{8}$ yard
UCLA 984 B	$\frac{5}{8}$ yard
UCLA 984 R	$\frac{5}{8}$ yard
UCLA 985 S	$\frac{5}{8}$ yard
UCLA 985 T	$\frac{5}{8}$ yard
UCLA 986 B	$\frac{5}{8}$ yard
UCLA 988 P	$\frac{5}{8}$ yard
UCLA 988 T	$\frac{5}{8}$ yard
CSNE W (white solid)	$3\frac{3}{4}$ yard
Backing: 5 yards of any UCLA fabric	

## Cutting

All strips are cut across the width of the fabric.

From UCLA 986 B, cut:

- (9)  $2\frac{1}{4}$ " x 42" binding strips

From each remaining UCLA fabric, cut:

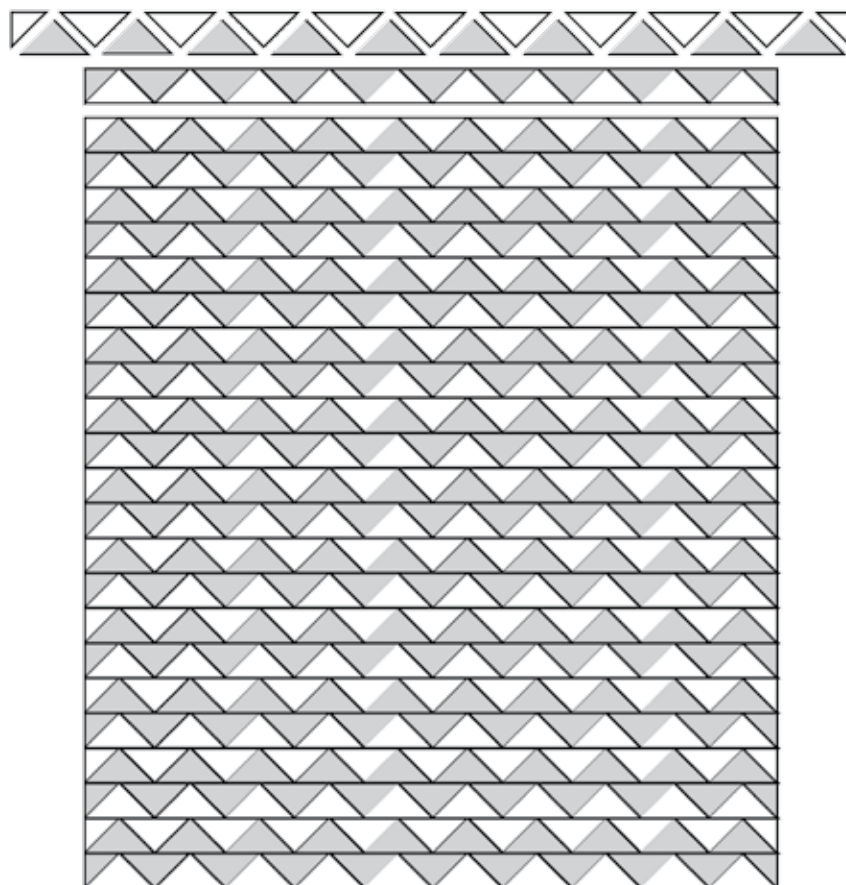
- (5)  $8\frac{1}{4}$ " squares; cut each square twice diagonally to yield 20 quarter-square triangles (1 is extra)
- (1)  $4\frac{3}{8}$ " square; cut in half diagonally to yield 2 half-square triangles

From CSNE W (white solid), cut:

- (15)  $8\frac{1}{4}$ " x 42" strips; cut the strips into:
  - (57)  $8\frac{1}{4}$ " squares; cut each square twice diagonally to yield 228 quarter-square triangles
  - (12)  $4\frac{3}{8}$ " square; cut in half diagonally to yield 24 half-square triangles

## Quilt Top Assembly

1. Refer to the photo for placement guidance. On a design wall, arrange the quarter-square triangles and half-square triangles in 24 rows as shown in the quilt-top assembly diagram below.
2. Join the triangles in each row, beginning and ending with a half-square triangle.
3. Join the rows, keeping the points centered and the side edges straight to complete the quilt top.
4. Layer the quilt top with batting and backing; baste. Quilt as desired. Using the  $2\frac{1}{4}$ "-wide strips, bind the edges to finish.



Quilt top assembly diagram