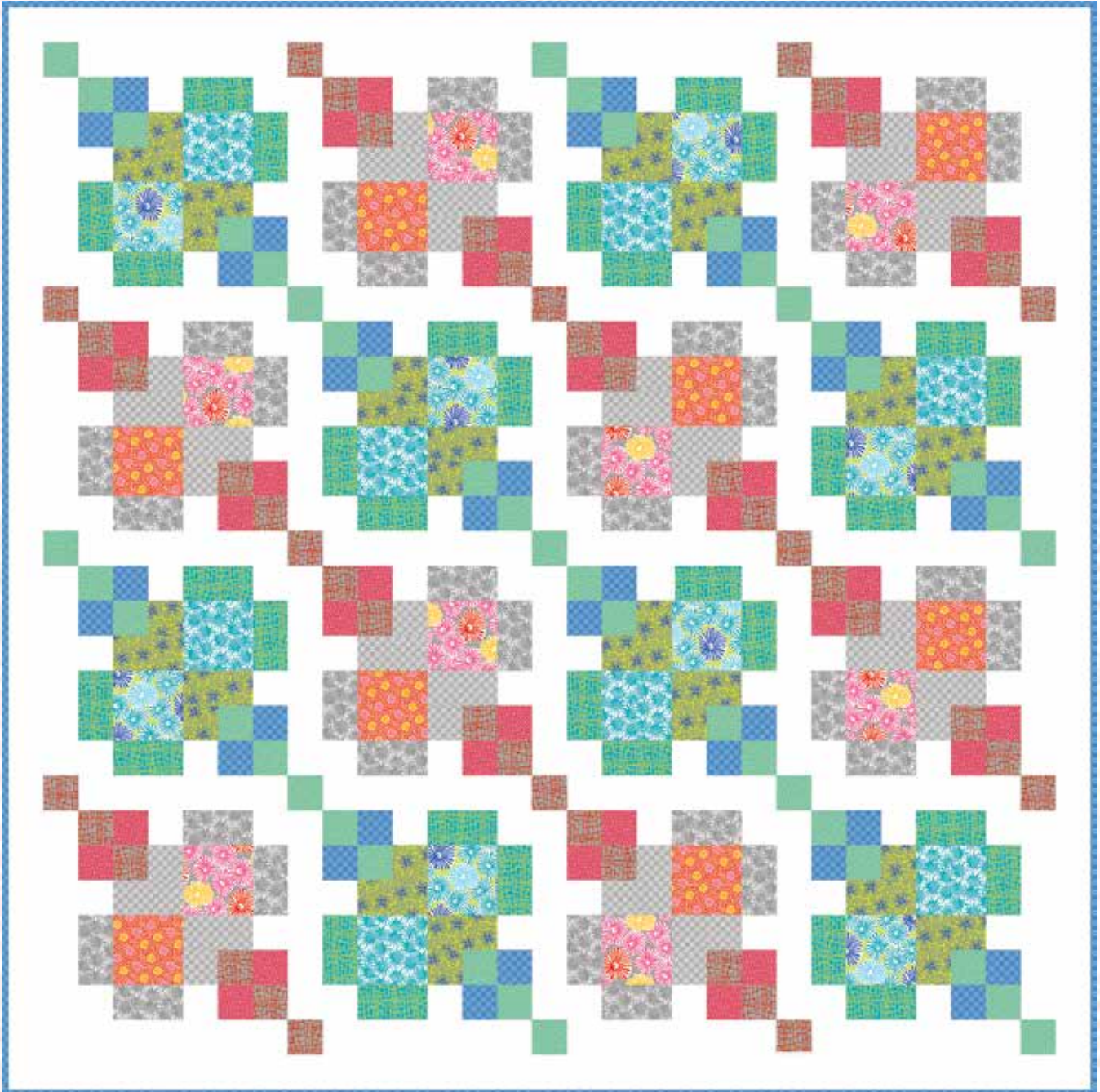


URBAN CLASSICS

Fabric Collection by **Nancy Mahoney**



Urban Classics

Urban Puzzle Boxes quilt by Nancy Mahoney featuring her *Urban Classics* collection for P&B Textiles

Quilt Size: 62" square

Yardage

Fabric A	UCLA 981 B	1/4 yard
Fabric B	UCLA 981 P	1/4 yard
Fabric C	UCLA 982 G	1/4 yard
Fabric D	UCLA 983 S	1/3 yard
Fabric E	UCLA 983 T	1/3 yard
Fabric F	UCLA 984 R	1/4 yard
Fabric G	UCLA 985 S	1/3 yard
Fabric H	UCLA 985 T	1/4 yard
Fabric I	UCLA 986 B	2/3 yard
Fabric J	UCLA 986 S	1/3 yard
Fabric K	UCLA 988 P	1/4 yard
Fabric L	UCLA 988 T	1/3 yard
Fabric M	CSNE W (solid white)	2 1/8 yards
Backing	any UCLA fabric	4 yards

Cutting

All strips are cut across the width of the fabric.

From fabric A (**UCLA 981 B**), cut:

- (1) 4 1/2" x 42" strip; cut into (8) 4 1/2" squares

From fabric B (**UCLA 981 P**), cut:

- (1) 4 1/2" x 42" strip; cut into (8) 4 1/2" squares

From fabric C (**UCLA 982 G**), cut:

- (1) 4 1/2" x 42" strip; cut into (16) 2 1/2" x 4 1/2" rectangles
- (1) 2 1/2" x 42" strip; cut into (16) 2 1/2" squares

From fabric D (**UCLA 983 S**), cut:

- (3) 2 1/2" x 42" strips; cut into (44) 2 1/2" squares

From fabric E (**UCLA 983 T**), cut:

- (2) 4 1/2" x 42" strips; cut into (32) 2 1/2" x 4 1/2" rectangles

From fabric F (**UCLA 984 R**), cut:

- (1) 4 1/2" x 42" strip; cut into (8) 4 1/2" squares

From fabric G (**UCLA 985 S**), cut:

- (2) 4 1/2" x 42" strips; cut into (32) 2 1/2" x 4 1/2" rectangles

From fabric H (**UCLA 985 T**), cut:

- (1) 4 1/2" x 42" strip; cut into (8) 4 1/2" squares

From fabric I (**UCLA 986 B**), cut:

- (2) 2 1/2" x 42" strips; cut into (32) 2 1/2" squares
- (7) 2 1/4" x 42" binding strips

From fabric J (**UCLA 986 S**), cut:

- (1) 4 1/2" x 42" strip; cut into (16) 2 1/2" x 4 1/2" rectangles
- (1) 2 1/2" x 42" strip; cut into (16) 2 1/2" squares

From fabric K (**UCLA 988 P**), cut:

- (2) 2 1/2" x 42" strips; cut into (32) 2 1/2" squares

From fabric L (**UCLA 988 T**), cut:

- (3) 2 1/2" x 42" strips; cut into (43) 2 1/2" squares

From fabric M (**CSNE W**), cut:

- (6) 2 1/2" x 42" strips; cut into (96) 2 1/2" squares
- (14) 2 1/2" x 42" strips; cut into (38) 2 1/2" x 12 1/2" sashing strips and (2) 2 1/2" x 14 1/2" sashing strips
- (7) 2 1/2" x 42" strips. Piece the strips; cut (2) 2 1/2" x 58 1/2" border strips and (2) 2 1/2" x 62 1/2" border strips.

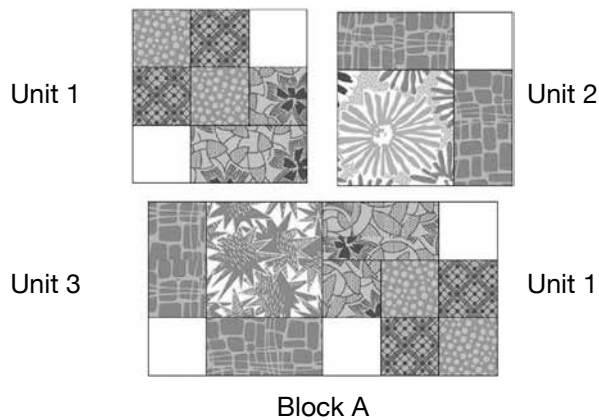
Block A Assembly

Refer to the block A diagram for placement guidance throughout.

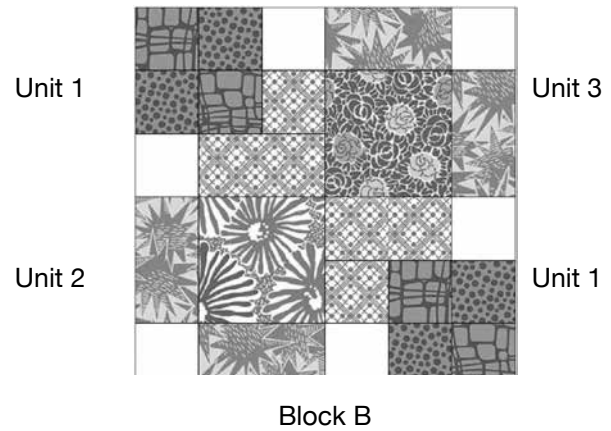
1. Lay out two fabric I squares and two fabric L squares in a four-patch arrangement. Join the squares into rows, and then join the rows to make a four-patch unit. Make 16 four-patch units.
2. Join a fabric C square and a fabric M square. Make 16 units. Sew one of these units to the right side of each four-patch unit from step 1 as shown in the block A diagram.
3. Join a fabric C rectangle and a fabric M square. Make 16 units.
4. Join a unit from step 3 to the bottom of each unit from step 2 to complete one Unit 1. Make 16 units.
5. Lay out one fabric A square, one fabric M square, and two fabric E rectangles as shown in the block A diagram. Join the pieces into rows, and then join the rows to complete one Unit 2. Make 8 units.

6. Lay out one fabric H square, one fabric M square, and two fabric E rectangles as shown in the block A diagram. Join the pieces into rows, and then join the rows to complete one Unit 3. Make 8 units.

7. Lay out two of Unit 1, one of Unit 2, and one of Unit 3 in a four-patch arrangement. Join the pieces into rows, and then join the rows to complete one of Block A. The block should measure $12\frac{1}{2}$ " square. Make a total of 8 blocks.



14. Lay out two of Unit 1, one of Unit 2, and one of Unit 3 in a four-patch arrangement. Join the pieces into rows, and then join the rows to complete one of Block B. The block should measure $12\frac{1}{2}$ " square. Make a total of 8 blocks.



Block B Assembly

Refer to the block B diagram for placement guidance throughout.

8. Lay out two fabric D squares and two fabric K squares in a four-patch arrangement. Join the squares into rows, and then join the rows to make a four-patch unit. Make 16 four-patch units.

9. Join a fabric J square and a fabric M square. Make 16 units. Sew one of these units to the right side of each four-patch unit from step 8 as shown in the block B diagram.

10. Join a fabric J rectangle and a fabric M square. Make 16 units.

11. Join a unit from step 10 to the bottom each unit from step 9 to complete one Unit 1. Make 16 units.

12. Lay out one fabric B square, one fabric M square, and two fabric G rectangles as shown in the block B diagram. Join the pieces into rows, and then join the rows to complete one Unit 2. Make 8 units.

13. Lay out one fabric F square, one fabric M square, and two fabric G rectangles as shown in the block B diagram. Join the pieces into rows, and then join the rows to complete one Unit 3. Make 8 units.

Quiltww Assembly

15. For the block rows, join two A blocks, two B blocks, and five fabric M $2\frac{1}{2}$ " x $12\frac{1}{2}$ " sashing strips, alternating the pieces as shown in the quilt photo. Join the pieces into rows. Make four block rows.

16. For the sashing rows, join three fabric D squares, two fabric L squares, and four fabric M $2\frac{1}{2}$ " x $12\frac{1}{2}$ " sashing strips, alternating them as shown in the quilt photo. Join the pieces into rows. Make two rows.

17. Repeat step 16, using three fabric L squares, two fabric D squares, and four fabric M $2\frac{1}{2}$ " x $12\frac{1}{2}$ " sashing strips to make a sashing row. Make one row.

18. For the top sashing row, join two fabric D squares, two fabric L squares, three fabric M $2\frac{1}{2}$ " x $12\frac{1}{2}$ " sashing strips, and one fabric M $2\frac{1}{2}$ " x $14\frac{1}{2}$ " sashing strip, alternating the pieces as shown in the photo. Repeat to make the bottom sashing row.

19. Referring to the quilt photo for placement guidance, lay out the block rows and sashing rows as shown. Join the rows to complete the quilt top center.

20. Sew fabric M $2\frac{1}{2}$ " x $58\frac{1}{2}$ " border strips to opposite sides of the quilt top center. Then sew $2\frac{1}{2}$ " x $62\frac{1}{2}$ " border strips to the top and bottom of the quilt top to complete the outer border.

21. Layer the quilt top with batting and backing; baste. Quilt as desired. Using the fabric I $2\frac{1}{4}$ "-wide binding strips, bind the edges to finish.

URBAN CLASSICS

Fabric Collection by **Nancy Mahoney**



UCLA 981 B



UCLA 982 G



UCLA 983 T



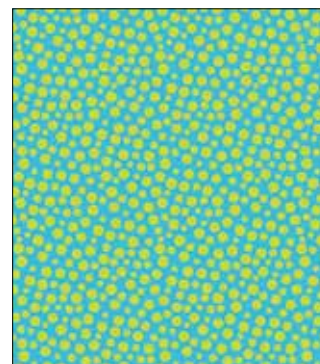
UCLA 984 B



UCLA 985 T



UCLA 986 B



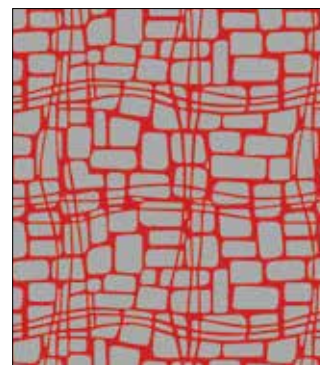
UCLA 988 T



UCLA 981 P



UCLA 982 S



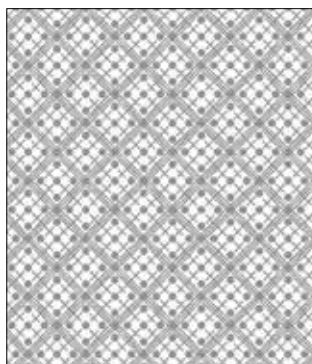
UCLA 983 S



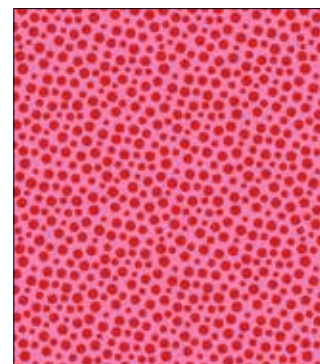
UCLA 984 R



UCLA 985 S



UCLA 986 S



UCLA 988 P



P&B Textiles ♦ www.pbtex.com ♦ 800-351-9087

45-47 Washington St., Pawtucket, RI 02860 ♦ 237 W. 35th St., 11th floor, New York, NY 10001

▲ 100% cotton ♦ Cold wash & dry ♦ 43" / 44" ♦ Colors may vary due to printing process

All fabrics shown at 50% scale except where indicated otherwise.