

# wander BLOSSOMS





# wanderBLOSSOMS

**Jewel Blossoms** quilt by Nancy Mahoney  
using the *Wander Blossoms* fabric collection  
by Danielle Donaldson for P&B Textiles

Size: 51" x 62"

## yardage

WAND 395 YG	5/8 yard
WAND 397 MU	5/8 yard
WAND 398 MU	1/2 yard
WAND 399 W	5/8 yard
WAND 401 YG	5/8 yard
WAND 400 B	1/2 yard
WAND 400 O	1/8 yard
WAND 402 OP	7/8 yard
WAND 403 B	1/8 yard
WAND 403 G	1/8 yard
WAND 403 O	1/8 yard
SUEM 300 BG	1/8 yard
SUEM 300 V	1/8 yard
CSNE W	1 7/8 yards
Backing: 3 1/4 yards of any WAND fabric	

## cutting

From each of **WAND 395 YG**, **397 MU**, **399 W**,  
and **401 YG**, cut:

- (5) 8 1/2" **A** squares (20 total)

From each of **WAND 400 O**, **403 B**, **403 G**,  
**403 O**, **SUEM 300 BG**, and **SUEM 300 V**, cut:

- (5) 3 1/2" **B** squares (30 total)

From **WAND 402 OP**, cut:

- (3) 8 1/2" x 42" strips; cut into  
(49) 2" x 8 1/2" **C** rectangles

From **CSNE W**, cut:

- (3) 8 1/2" x 42" strips; cut into  
(98) 1 1/4" x 8 1/2" **D** rectangles
- (16) 2" x 42" strips; cut into  
(316) 2" **E** squares

From **WAND 400 B**, cut:

- (6) 2 1/2" x 42" outer-border strips

From **WAND 398 MU**, cut:

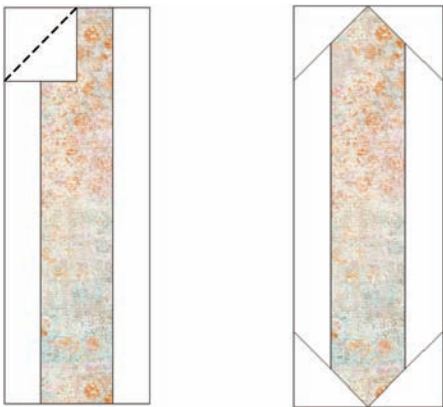
- (6) 2 1/4" x 42" binding strips



## assembly

**1.** Sew white D rectangles to opposite sides of each C rectangle to make a pieced strip.

**2.** Draw a diagonal line from corner to corner on the wrong side of each white E square. Place a marked square on one corner of a pieced strip, right sides together. Sew on the marked line. Trim the excess corner fabric, leaving a  $\frac{1}{4}$ " seam allowance. In the same way, sew marked squares to the remaining three corners of the strip to complete a sashing strip. Make a total of 49 sashing strips.



**3.** Place a marked white square from step 2 on one corner of a B square. Sew on the marked line. Trim the excess corner fabric, leaving a  $1\frac{1}{4}$ " seam allowance. In the same way, sew marked squares to the remaining three corners of the square to complete a sashing block. Make a total of 30 sashing blocks.



**4.** To make the block rows, join five sashing strips and four A squares, referring to the cover image for placement guidance. Make five block rows.

**5.** To make the sashing rows, join five sashing blocks and four sashing strips as shown in the cover image. Make six sashing rows.

**6.** Join the block rows and sashing rows, beginning and ending with a sashing row as shown in the cover image.

**7.** Join the 400 B outer-border strips together end to end. From the pieced strip, cut two  $58\frac{1}{2}$ "-long strips and sew them to opposite sides of the quilt top. From the remaining pieced strip, cut two  $51\frac{1}{2}$ "-long strips and sew them to the top and bottom of the quilt top to complete the outer border.

**8.** Layer the quilt top with batting and backing; baste. Quilt as desired. Using the 398 MU binding strips, bind the edges to finish.







WAND 395 YG



WAND 396 W



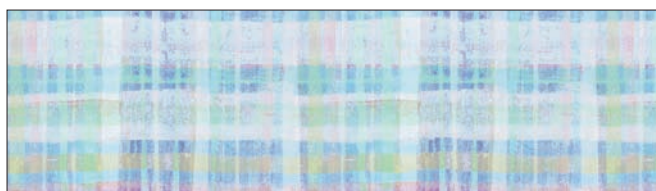
WAND 397 MU



WAND 399 W



WAND 401 YG



WAND 400 B



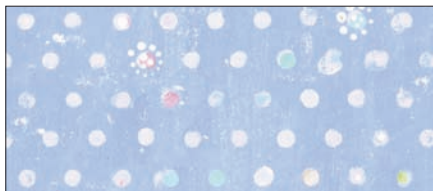
WAND 400 O



WAND 402 OP



WAND 398 MU



WAND 403 B — 50% scale



WAND 403 G — 50% scale



WAND 403 O — 50% scale



P&B Textiles ♦ [www.pbtex.com](http://www.pbtex.com) ♦ 800-351-9087

45-47 Washington St, Pawtucket, RI 02860 ♦ 237 W. 35th St, 11th floor, New York, NY 10001

△ 100% cotton ♦ Cold wash & dry ♦ 43"/44" ♦ Colors may vary due to printing process

All fabrics shown at 25% scale except where indicated otherwise.